



0800 031 5175

AN ESTABLISHED NATIONAL SUPPLIER OF
SCISSOR AND BOOM LIFTS FOR SALE & HIRE

Data Sheet

ELECTRIC/BI-FUEL BOOMS

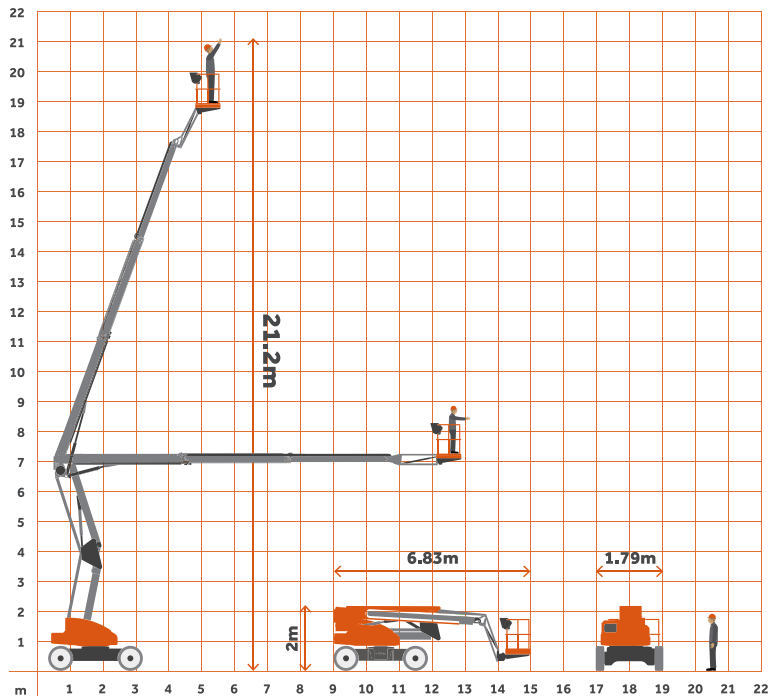
HR21

The HR21 is a lightweight, highly manoeuvrable machine that offers precise positioning and smooth operation. Its 1.8m wide ToughCage (with a steel cage option available) provides ample space for materials and tools, and its impact-resistant composite base and larger cross-section steel rails give it additional strength and durability. The 160° cage rotation and 150° fly-boom allow for precise positioning anywhere in its vast working envelope, while the multi-award-winning SiOPS® provides additional operator protection.



Specifications

Working Height	21.20m
Platform Height	19.20m
Overall Length	6.25m
Stowed Height	2.15m
Deck Extension	N/A
Width	2.25m
Weight Overall	6100kg
Cage Capacity	225kg
Horizontal Outreach	13.20m
Fold-down Hardrail	No



To get a **FREE QUOTE** call 0800 031 5175
or email: sales@bellaaccess.com